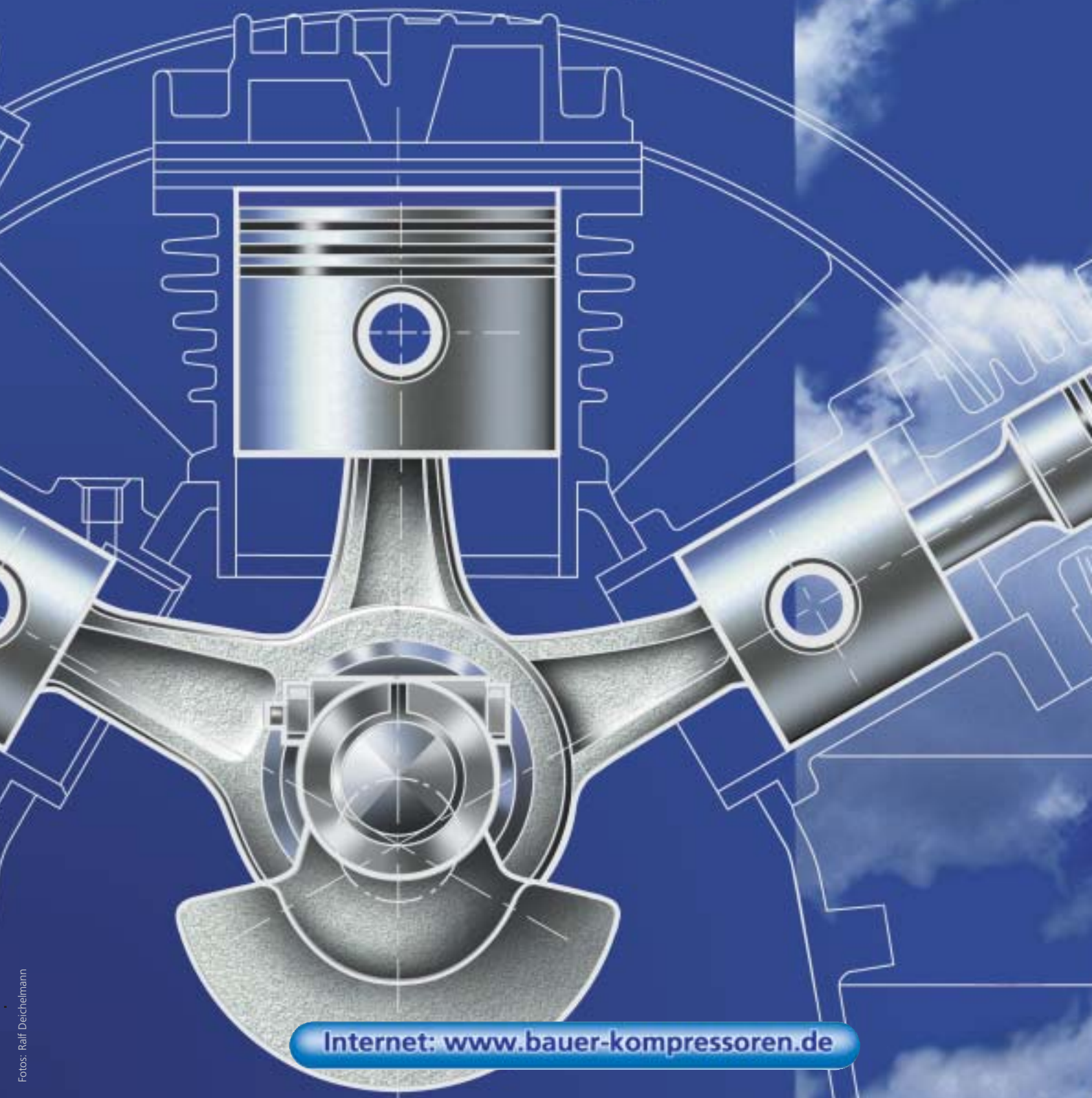


**BAUER**  
KOMPRESSOREN

# Industrial- Compressor- Systems

*Air + Nitrogen* —



Internet: [www.bauer-kompressoren.de](http://www.bauer-kompressoren.de)

# HIGH PRESSURE INTEGRATED SYSTEM TECHNOLOGY

## CUSTOM-BUILT FOR SPECIFIC INDUSTRIAL APPLICATIONS

Modern industrial processes require absolute operating safety, flexible unit configuration and investment security.

**High Pressure System Technology** by **BAUER** enables each customer to tailor the unit **exactly according to their requirements**.

This **process begins** at the **conceptual stage** and in the design and development of the compressor unit. BAUER perceives the **design, development** and **evolution** of its machines as a **partnership between Manufacturer and User**. This philosophy is continuous in the approach to provision of **spare parts, long-term maintenance contracts** and **product support** to ensure every customer a **first class service**.



*High Pressure Leakage Testing*

### Units for **Compression**

of air and N<sub>2</sub>

**Pressure range:**  
25 to 500 bar

**F.A.D.:**  
6 to 408 m<sup>3</sup>/h

**Design:**  
Open Configuration or Super Silent (Enclosed)

### Systems for **Purification**

of air and N<sub>2</sub>

#### **P-filter systems**

Removal of CO<sub>2</sub> (at intake), Humidity, Oil, CO and Solid Particle contaminants in Air and N<sub>2</sub>.

#### **SECCANT Regenerative Dryer**

Made for **continuous operation** and **efficient, economic purification** air and gas.

**Air qualities** in accordance with **various standards** are achievable:

-**breathing air acc. to**  
DIN EN 12021

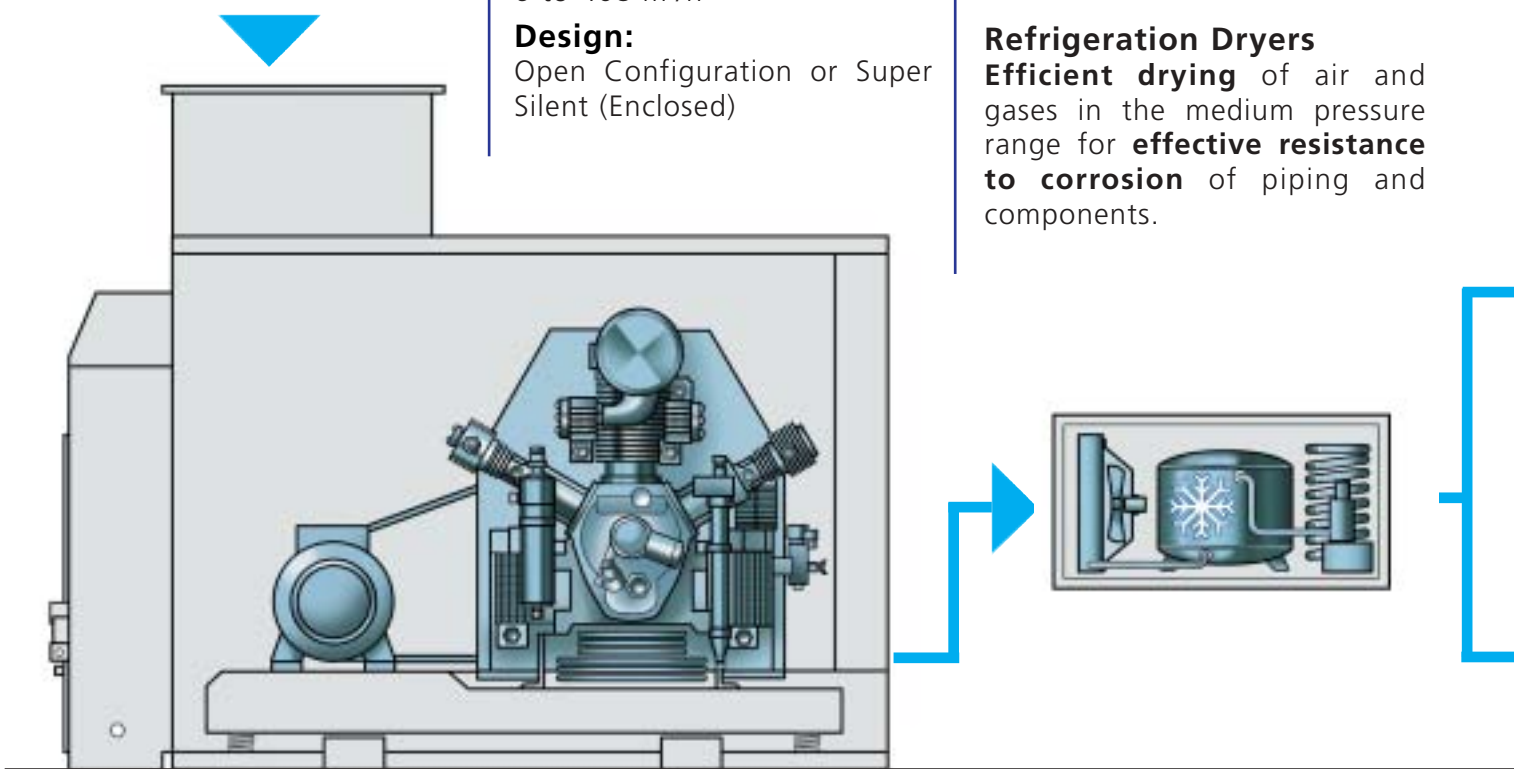
-**medical air** acc. to European pharmacy

-**purest air** acc. to MILR81202D resp. DEF Std. 58-96

-compressed air acc. to **DIN EN ISO 8573-1**, oil content class 2, particle and humidity class 3

#### **Refrigeration Dryers**

**Efficient drying** of air and gases in the medium pressure range for **effective resistance to corrosion** of piping and components.





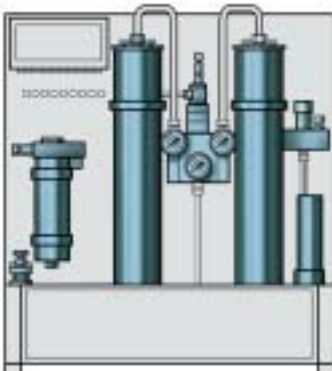
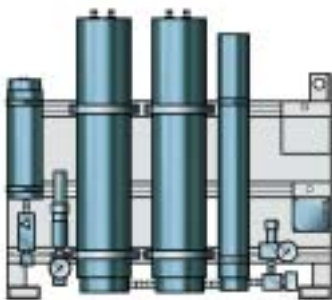
Aircraft components inflation with N<sub>2</sub>

## Systems for Storage

of air and N<sub>2</sub>

**Storage cylinder systems up to 500 bar** with 50 or 80 l water volume \*. Units are available as **single unit** or as an extendable **modular system** to provide the required storage capacity. Dependant upon physical limitations, **various configurations can be provided** to optimize the utilization of available space.

\*geometric volume



## Systems for Distribution and Dosing

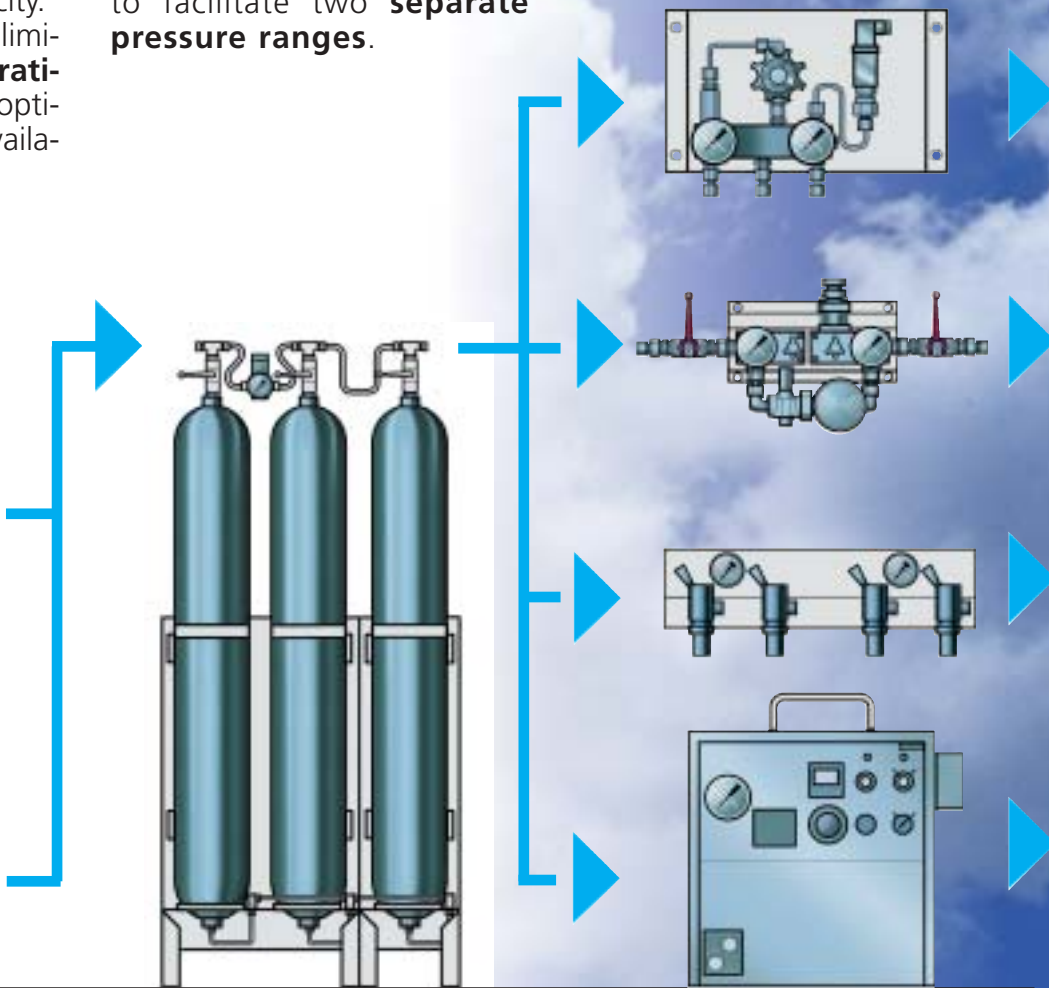
of air and N<sub>2</sub>

**Switch over device** for maximum rate cylinder filling. Switch on of unit only for topping up of storage cylinders.

**Pressure reducing panels:** for constant regulation of outlet pressure.

**Filling panels** for breathing air, industrial air and N<sub>2</sub>. Available in a **great variety** of standard configurations to **satisfy every need** with options for switch over device to facilitate two **separate pressure ranges**.

**Dosing stations** with fully programmable pressure range for testing and/or pressurization of associated equipment.



## BAUER COMPRESSOR TECHNOLOGY

### SAFE AND ECONOMICAL

Simple operation and low maintenance costs can only be achieved through intelligent unit design.

The **engineering team** at the **BAUER Research and Development Center** strives to ensure that BAUER keeps at the **forefront of technology**. Our **product portfolio** includes a complete range of machines to suit **standard applications** and is complimented by our ability to design and construct **special compressor units** for **customer defined applications**.



*Automatic Condensate Drains*

### Maximum Space Saving

through Compact Design

All BAUER components are **mounted on a common base frame** and arranged with forethought and care to ensure **space saving** is at a premium.

### Smooth Unit Running

for maximum machine life

Considerable time and engineering goes into the design of the **generously dimensioned shock absorbers** and **rigid base frames** fitted to BAUER Compressors to guarantee the **best possible isolation of vibration**. This minimizes the effect on the environment and assures maximum machine life with greatly reduced stresses on component parts.



*B 25.5 Super Silent -unit*

## Total Control

with B-CONTROL

The **BAUER B-CONTROL** with **clear display** controls the compressor, the motor as well as the automatic condensate drain.

The clear display **informs** the operator **at any time** about all important parameters such as oil, final temperature and maintenance work due.

Pressure and temperature **monitoring** of each stage ensure **maximum operating safety**.



## Uncompromised Quality

through perfect control

BAUER ensures **maximum quality** by extensive **quality assurance monitoring during production** according to the requirements defined in **DIN EN ISO 9001**.

**Each single compressor block** is tested in a **continuous test run**.

The **final unit test** is done under **real operating conditions**.

Each compressor unit undergoes an **extensive function- and safety test**.

**All units are built to satisfy customer requirements.**

## Simple Operation

saves Money

The principles behind the design of BAUER compressor units are Logic and Simplicity. **Ease of maintenance, best access and user friendliness** are all **integral** to the **machine design**.

In this modern world, **time is valuable**.

Simple operation, simple maintenance and easy adaptation to special requirements **saves time and saves money**.



Pressure Monitoring

## Ready to Use

with turn-key systems

BAUER compressor units are **delivered** to the customer completely **pretested** and **ready for operation**.

This guarantees a **quick, simple** and **safe** commissioning.



B-CONTROL

## THE BAUER COMPRESSOR BLOCK

### EVERY UNIT HAS A STRONG HEART BEATING WITHIN

More than 50 years of experience and the knowledge in our Research and Development Center are devoted to each BAUER compressor block.

BAUER compressor blocks have a **legendary world wide reputation** for excellence due to their **reliability** and **durability**.

Our **reputation** has been **well earned** through considerable time and **effort spent on the development** of our machines with **intelligent detailed solutions** and the use of **highest quality materials** combined with **uncompromised manufacturing quality**.



*Cylinders with extreme stability*

### Made for highest **Durability**

The **bearings** in the **BAUER Compressor** are designed and constructed for a working life of **more than 30.000 operating hours**.



*A cool solution*

### Designed for **Continuous**

**operation**

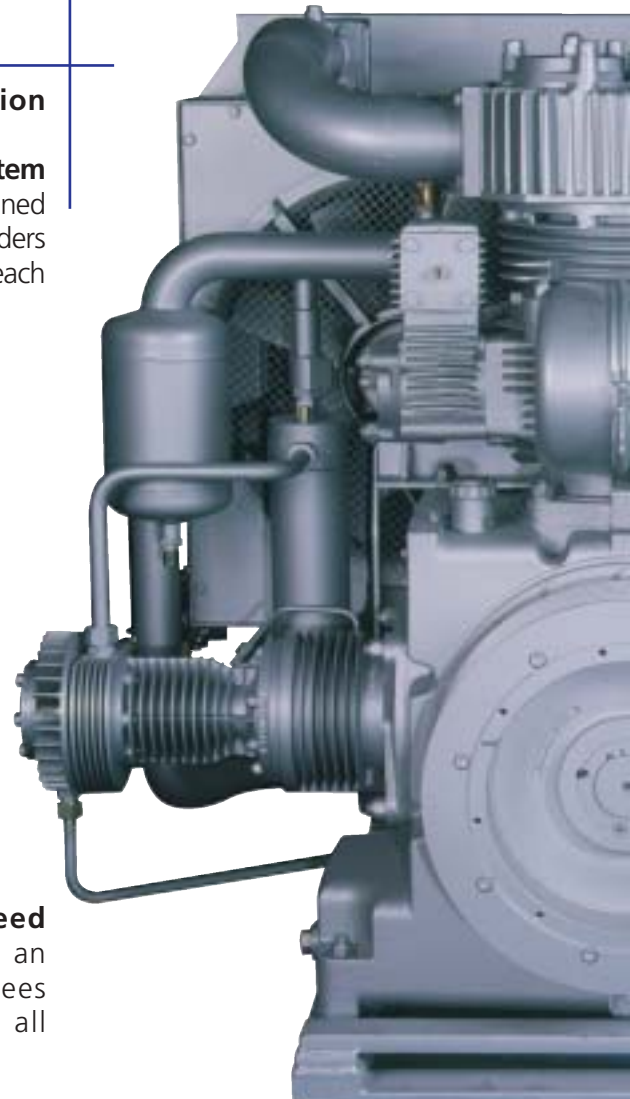
The **intelligent cooling system** with over-sized coolers combined with large-surface ribbed cylinders ensure **optimum cooling** of each compression stage.

An **efficient forced feed lubrication system** with an oil micro filter guarantees **minimum of wear** of all moving parts.

### Operating **Safety**

**for sure**

**Full stroke safety valves** after each stage of compression protect the block and the system to **provide maximum safety**.



KB 60

## High Efficiency

guaranteed

**Optimized cylinder design** and gas flow characteristics provide the BAUER compressor with absolute **maximum performance** at **minimum power consumption**. Best efficiency through better design.

## Low Costs

for maintenance and operation

**Long maintenance intervals** for valve checking and oil change (every 2000 operating hours) as well as piston ring check (every 3000 operating hours) **keep the operating costs** for the unit **at a minimum**.

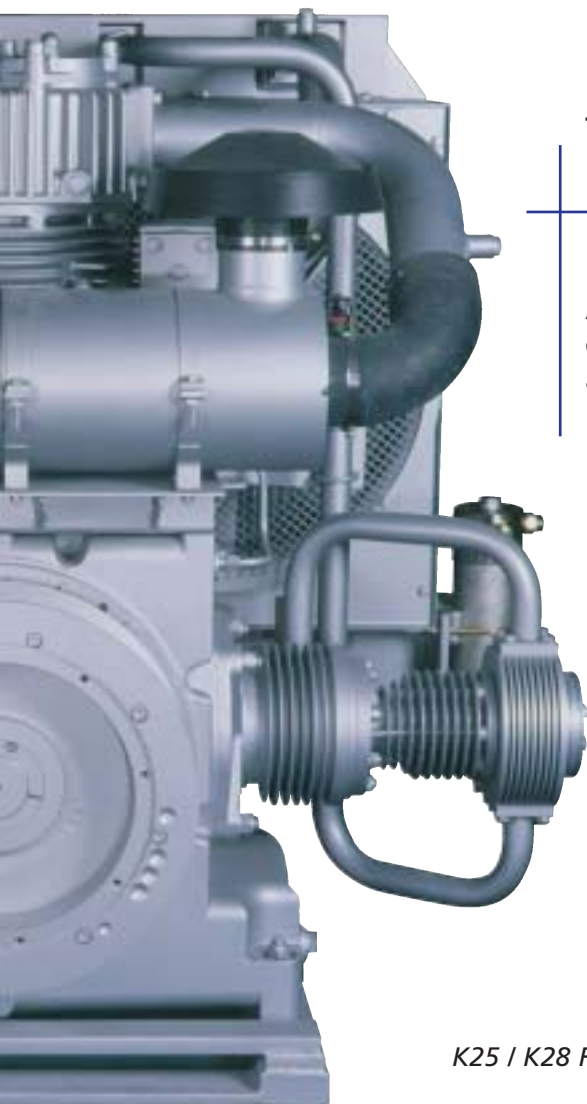


*K 22 Range*

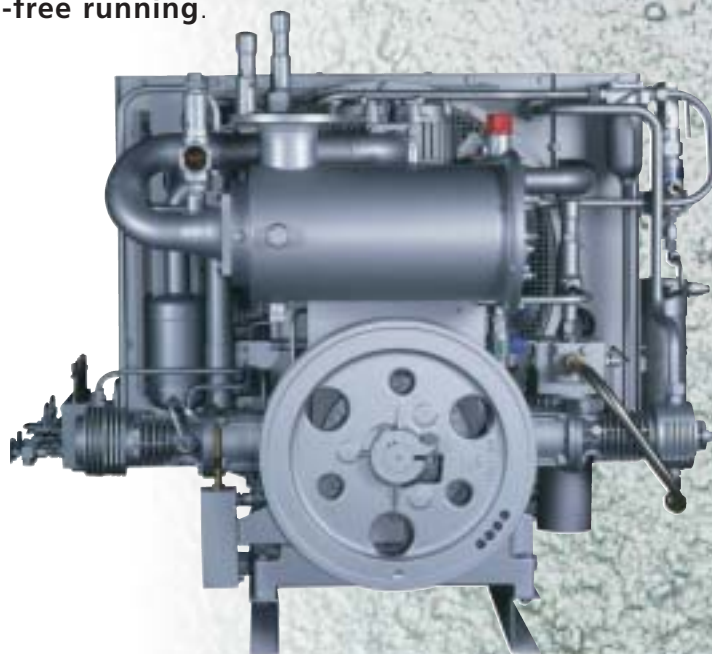
## Trimmed for Quiet

running

All driving gears are **dynamically balanced** for a smooth and **vibration-free running**.

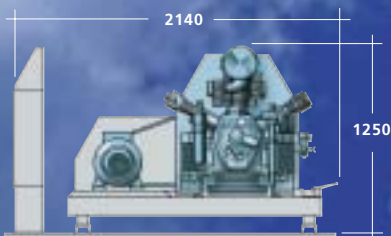
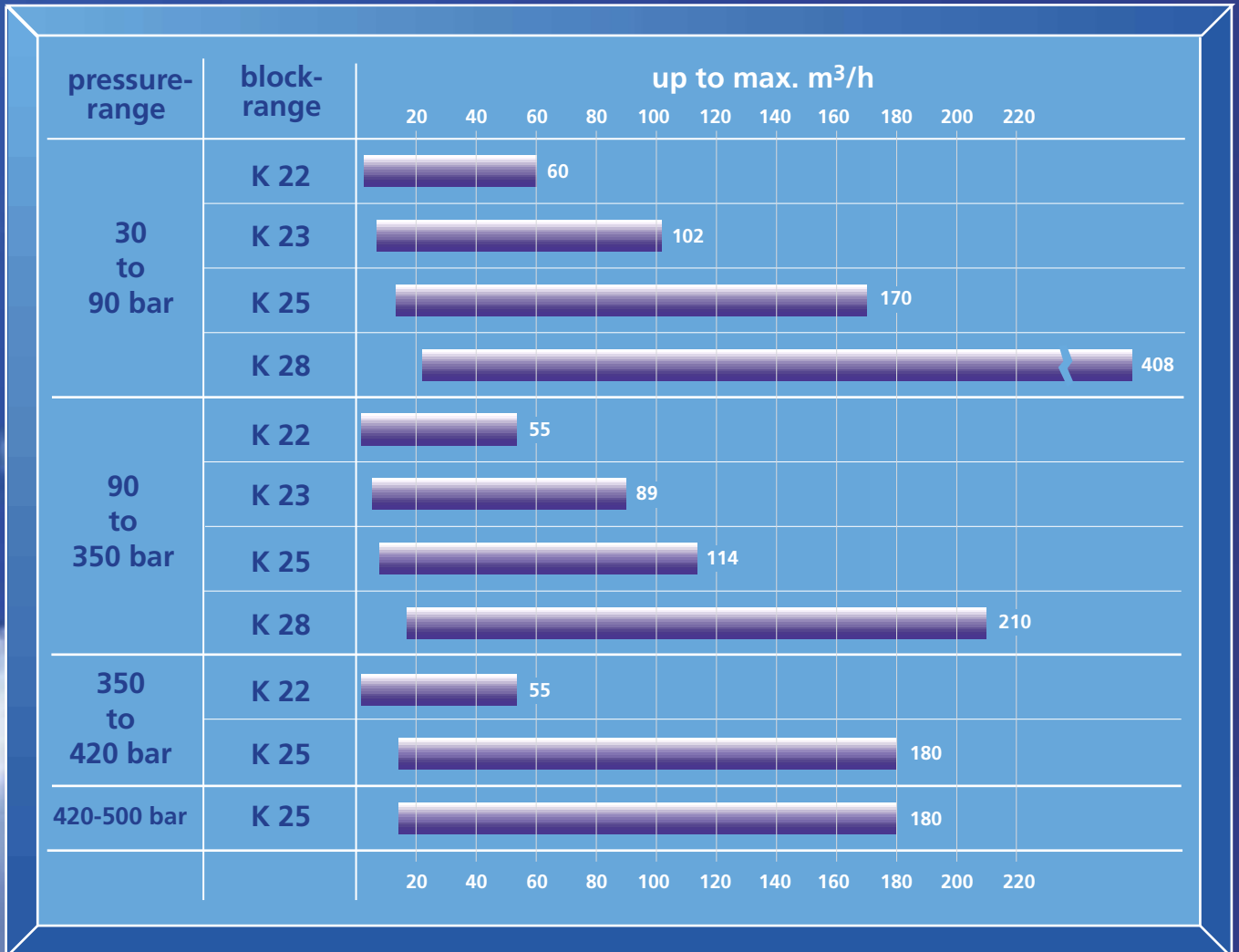


*K25 / K28 Range*

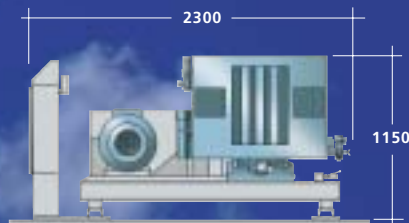


*K 23 Range*

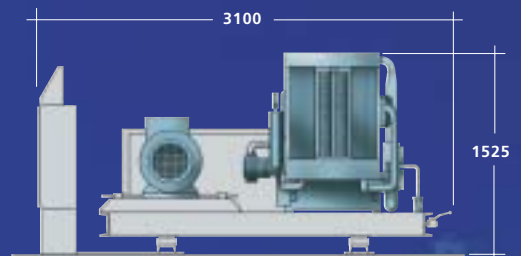
## OUR PRODUCT RANGE



block range K22



block range K23



block range K25 / K28



### BAUER KOMPRESSOREN GmbH

P.O. BOX 710260 · D-81452 MÜNCHEN  
 DRYGALSKI-ALLEE 37 · D-81477 MÜNCHEN  
 PHONE 0049 89 78049-0  
 FAX 0049 89 78049-167  
 Internet: [www.bauer-kompressoren.de](http://www.bauer-kompressoren.de)  
 e-mail: [info@bauer-kompressoren.de](mailto:info@bauer-kompressoren.de)